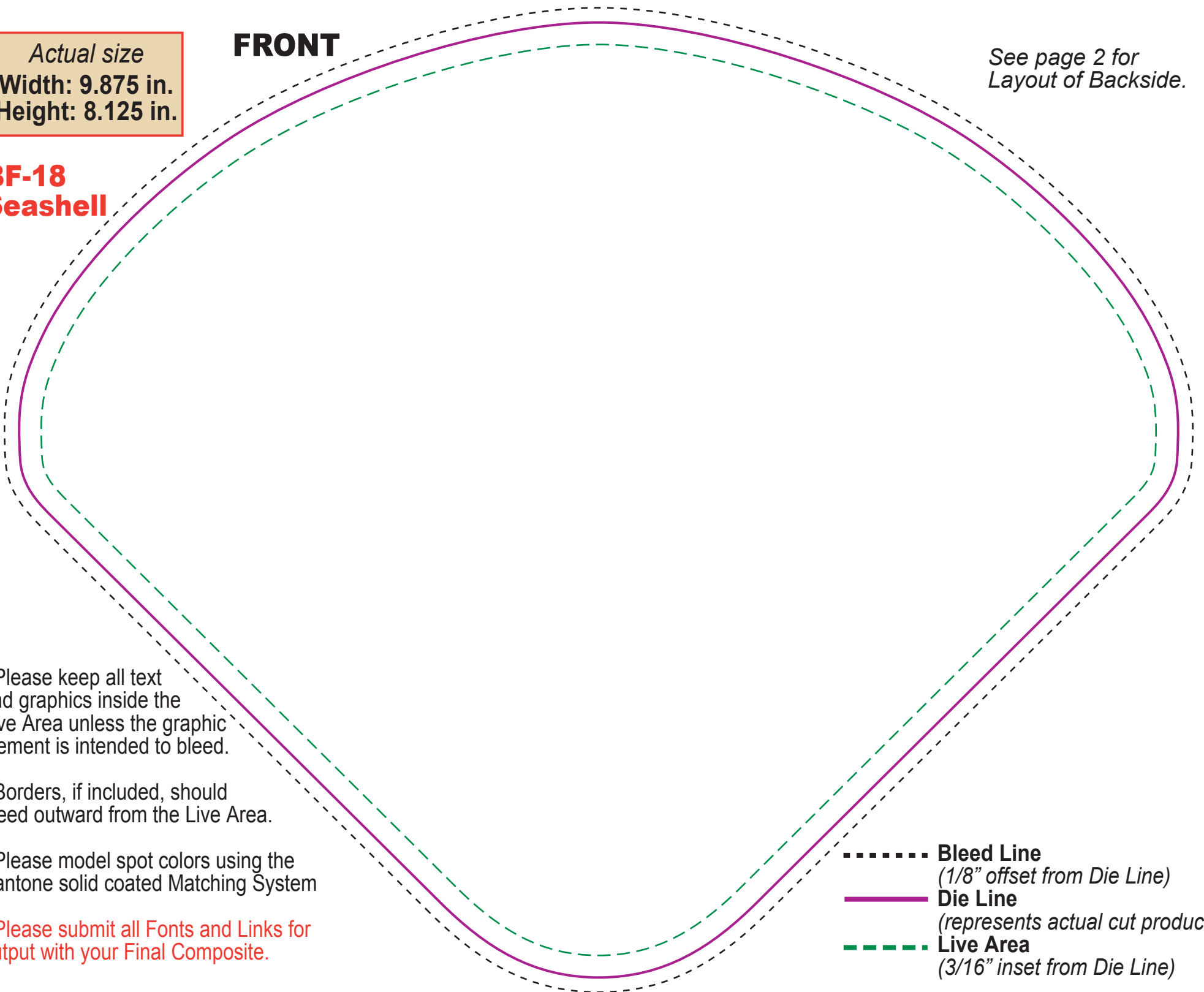


FRONT

Actual size
Width: 9.875 in.
Height: 8.125 in.

*See page 2 for
Layout of Backside.*

BF-18 Seashell



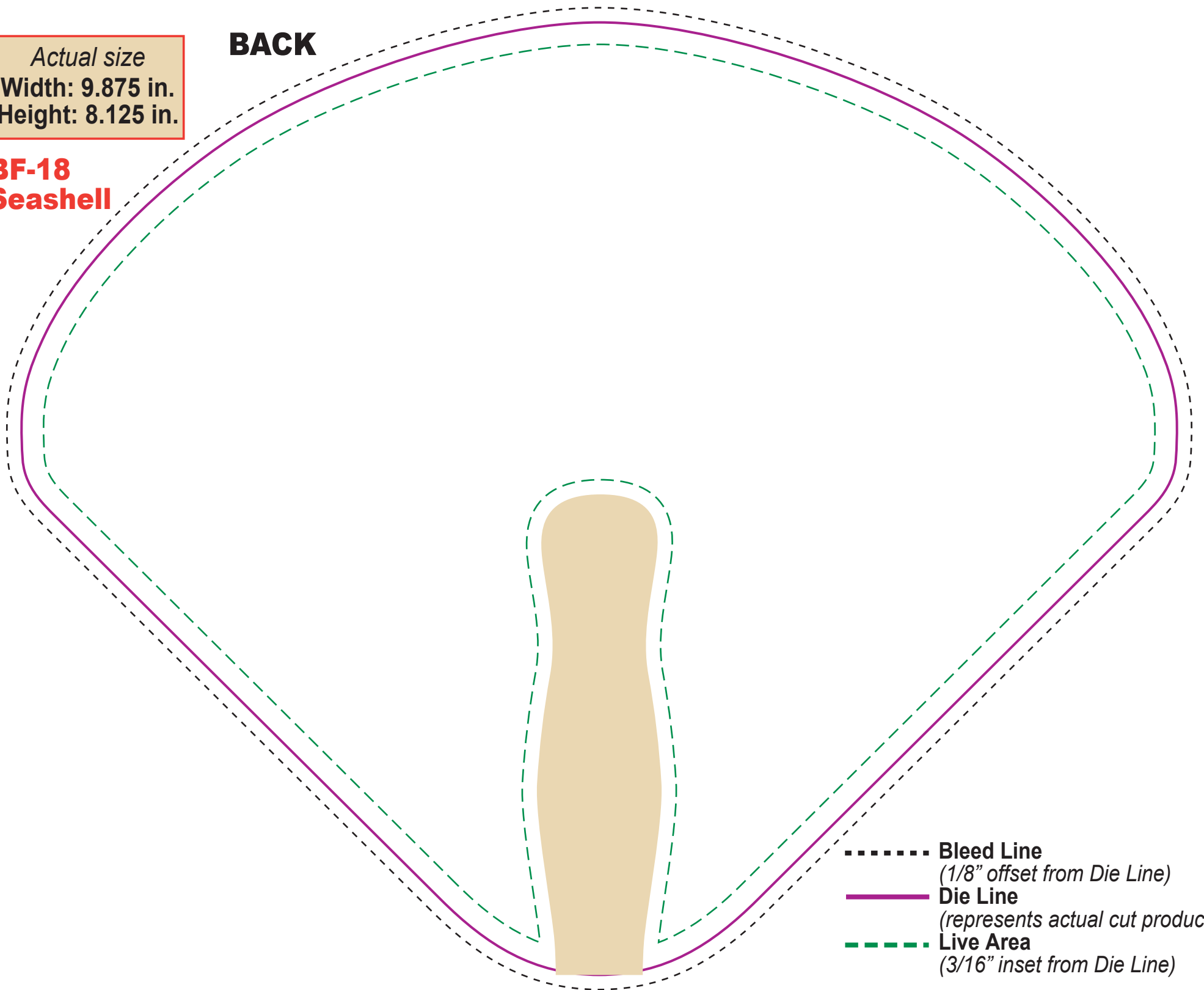
- Please keep all text and graphics inside the Live Area unless the graphic element is intended to bleed.
- Borders, if included, should bleed outward from the Live Area.
- Please model spot colors using the Pantone solid coated Matching System
- Please submit all Fonts and Links for output with your Final Composite.

- - - - - - **Bleed Line**
(1/8" offset from Die Line)
- ————— **Die Line**
(represents actual cut product)
- - - - - - **Live Area**
(3/16" inset from Die Line)

BACK

Actual size
Width: 9.875 in.
Height: 8.125 in.

BF-18
Seashell



- Bleed Line**
(1/8" offset from Die Line)
- Die Line**
(represents actual cut product)
- Live Area**
(3/16" inset from Die Line)