

Actual size
Width: 10.5 in.
Height: 7.75 in.

FRONT

BF-65 Horse

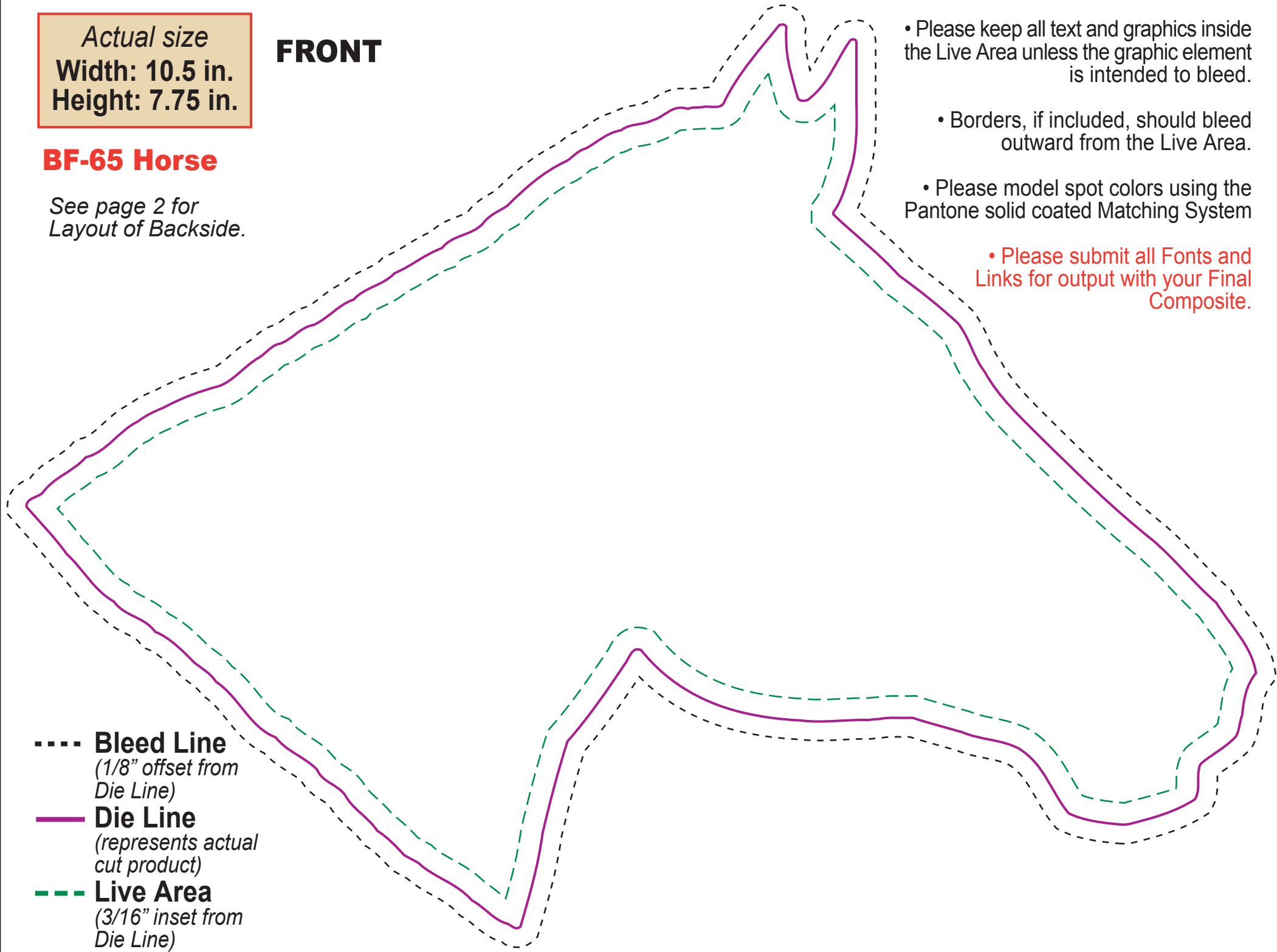
*See page 2 for
Layout of Backside.*

- Please keep all text and graphics inside the Live Area unless the graphic element is intended to bleed.

- Borders, if included, should bleed outward from the Live Area.

- Please model spot colors using the Pantone solid coated Matching System

- Please submit all Fonts and Links for output with your Final Composite.



- **Bleed Line**
(1/8" offset from Die Line)
- **Die Line**
(represents actual cut product)
- - - **Live Area**
(3/16" inset from Die Line)

BACK

Actual size
Width: 10.5 in.
Height: 7.75 in.

BF-65 Horse

- **Bleed Line** (*1/8" offset from Die Line*)
- **Die Line** (*represents actual cut product*)
- - - - **Live Area** (*3/16" inset from Die Line*)

